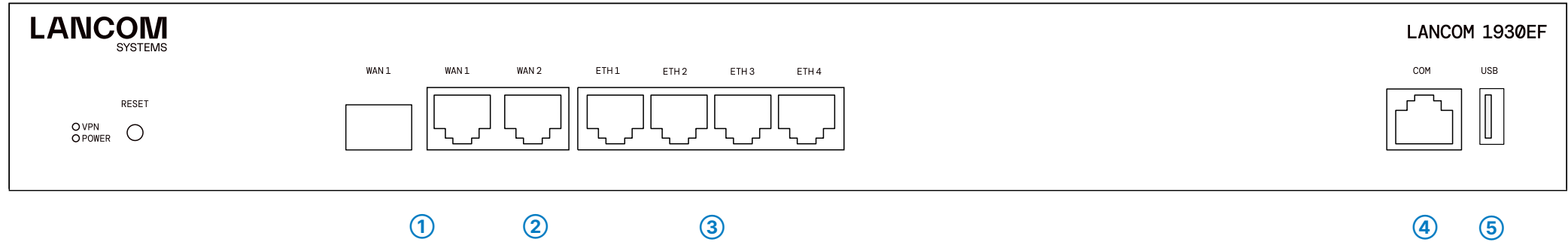
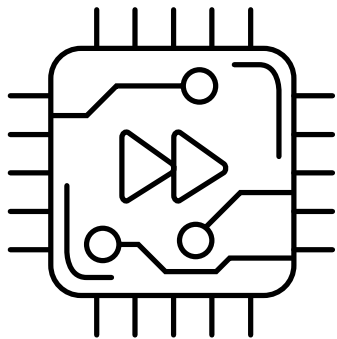
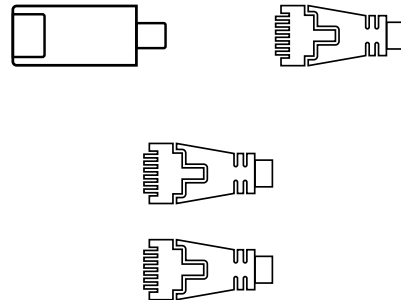


## Hardware Quick Reference

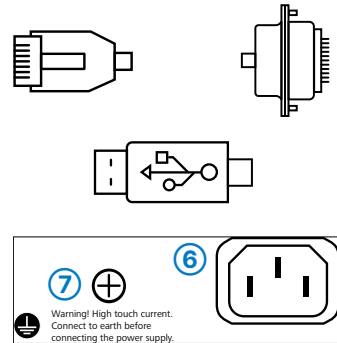
# LANCOM 1930EF



- ① WAN 1 interfaces (SFP / TP combo port)**  
Insert a suitable SFP module (e.g. 1000Base-SX or 1000Base-LX) into the SFP port. Choose a cable compatible with the SFP module and connect it as described in the module's documentation. SFP module and cable are not included.  
If desired, alternatively connect the WAN 1 TP interface to a WAN modem using the provided Ethernet cable with green connectors.
- ② WAN 2 interface (TP)**  
Connect the WAN 2 interface to a WAN modem using the provided Ethernet cable with green connectors.
- ③ Ethernet interface**  
Use the cable with the kiwi-colored connectors to connect one of the interfaces ETH 1 to ETH 4 to your PC or a LAN switch.



- ④ Configuration interface**  
Use the included serial configuration cable to connect the serial interface (COM) to the serial interface of the device you want to use for configuring / monitoring.
- ⑤ USB interface**  
You can use the USB interface to connect a USB printer or a USB storage device.
- ⑥ Power connector and grounding point (device back side)**  
Supply power to the device via the power connector. Please use the IEC power cable supplied (separately available for WW devices).
- ⑦ ATTENTION:** High touch current possible! Connect to earth before connecting the power supply.



Before initial startup, please make sure to take notice of the information regarding the intended use in the enclosed installation guide!

Operate the device only with a professionally installed power supply at a nearby power socket that is freely accessible at all times.

The power plug of the device must be freely accessible.

Please note that support for third-party accessories is not provided.



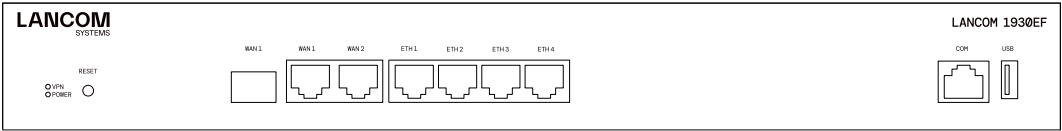
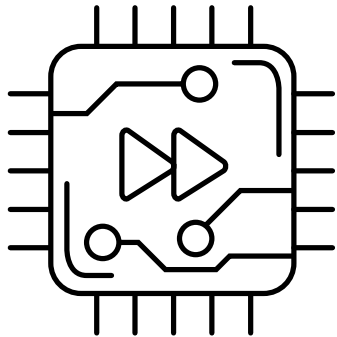
#### Please observe the following when setting up the device

- For devices to be operated on the desktop, please attach the adhesive rubber footpads
- Do not rest any objects on top of the device and do not stack multiple devices
- Keep all ventilation slots of the device clear of obstruction
- Mount the device into a 19" unit in a server cabinet using the provided screws and mounting brackets. Pay attention to the "R" and "L" marks on the brackets for accurate mounting.

LED description & technical details

Hardware Quick Reference

# LANCOM 1930EF



- A
- B
- C
- D

A POWER / VPN	B RESET
<b>POWER</b>	Reset button
Off	Device switched off
Green, permanently*	short press > Restart the device long press > Reset the device
Green / red, blinking	
No password set. Without a password the configuration data in the device is unprotected.	
Red, blinking	
Charge or time limit reached	
1x green inverse blinking*	
Connection to the LMC active, pairing OK, device not claimed	
2x green inverse blinking*	
Pairing error, resp. LMC activation code not available	
3x green inverse blinking*	
LMC not accessible, resp. communication error	
<b>VPN</b>	
Off	
VPN connection inactive	
Green, permanently	
VPN connection active	
Green, flashing	
VPN connecting	

C WAN 1 / WAN 2	D ETH 1 - ETH 4
Green, orange off	No networking device connected
Green, permanently	Connection to network device operational, no data traffic
Green, flickering	Data transmission
Orange off	1000 Mbps
Orange, permanently	10 / 100 Mbps
Green, orange off	No networking device connected
Green, permanently	Connection to network device operational, no data traffic
Green, flickering	Data transmission
Orange off	1000 Mbps
Orange, permanently	10 / 100 Mbps

Hardware	
Power supply	Internal power supply unit (100–240 V, 50-60 Hz)
Power consumption	Max. 18 W
Environment	Temperature range 0–40 °C, humidity 0–95 %; non-condensing
Housing	Robust metal housing, 1 HU with mounting brackets for 19" installation, 345 × 44 × 253 mm (W x H x D)
Number of fans	None; fanless design, no rotating parts, high MTBF
Interfaces	
WAN 1 / WAN 2 ETH 1 - ETH 4 Config (COM) / V.24 USB	Detailed interface specifications can be found in the device data sheet after entering the device name at <a href="http://www.lancom-systems.com/downloads">www.lancom-systems.com/downloads</a> .
Package content	
Cables	1 Ethernet cable, 3 m (kiwi colored connectors); 1 IEC power cord 230 V (not for WW devices)
Mounting brackets	Two 19" brackets for rack mounting

\*) The additional power LED statuses are displayed in 5-seconds rotation if the device is configured to be managed by the LANCOM Management Cloud.

Hereby, LANCOM Systems GmbH | Adenauerstrasse 20/B2 | D-52146 Wuersele, declares that this device is in compliance with Directives 2014/30/EU, 2014/35/EU, 2011/65/EU, and Regulation (EC) No. 1907/2006. The full text of the EU Declaration of Conformity is available at the following Internet address: [www.lancom-systems.com/doc](http://www.lancom-systems.com/doc)