

LANCOM

Options-Aktivierung

Handbuch



LANCOM
SYSTEMS

Copyright

© 2024 LANCOM Systems GmbH, Wuerselen (Germany). All rights reserved. While the information in this manual has been compiled with great care, it may not be deemed an assurance of product characteristics. LANCOM Systems shall be liable only to the degree specified in the terms of sale and delivery. The reproduction and distribution of the documentation and software supplied with this product and the use of its contents is subject to written authorization from LANCOM Systems. We reserve the right to make any alterations that arise as the result of technical development.

Windows® and Microsoft® are registered trademarks of Microsoft, Corp. LANCOM, LANCOM Systems, LCOS, LANcommunity and Hyper Integration are registered trademarks. All other names or descriptions used may be trademarks or registered trademarks of their owners. This document contains statements relating to future products and their attributes. LANCOM Systems reserves the right to change these without notice. No liability for technical errors and / or omissions.

Products from LANCOM Systems include software developed by the "OpenSSL Project" for use in the "OpenSSL Toolkit" (www.openssl.org).

Products from LANCOM Systems include cryptographic software written by Eric Young (eyay@cryptsoft.com).

Products from LANCOM Systems include software developed by the NetBSD Foundation, Inc. and its contributors.

Products from LANCOM Systems contain the LZMA SDK developed by Igor Pavlov.

The product contains separate components which, as so-called open source software, are subject to their own licenses, in particular the General Public License (GPL). If required by the respective license, source files for the affected software components are made available on request. To do this, please send an e-mail to gpl@lancom.de.

LANCOM Systems GmbH
A Rohde & Schwarz Company
Adenauerstr. 20/B2
52146 Wuerselen, Germany
www.lancom-systems.com
Wuerselen, 02/2024



Introduction

Thank you for purchasing a LANCOM software option. The LANCOM software options allow you to add new features to your devices with a minimum of effort.

Activating LANCOM software options

LANCOM software options are activated in three steps:

- Checking the prerequisites for installation
- Activating the LANCOM software option
- Checking the activation

Installation requirements

System requirements

Please ensure that you have met all of the requirements to successfully operate the software options:

- Your LANCOM device must support the use of this software option.
For information on whether your device supports the desired software option, refer to the LANCOM Systems website at www.lancom-systems.com/products/software-accessories/software-options/ on the respective product webpage.
- The version of LCOS (firmware) that you operate must support the software option. Some functions are not available in older versions. LANCOM Systems recommends that you use an up-to-date version of LCOS.

Package content

Please ensure that the software option package includes the following components:

- Proof of license with a printed license number
- Manual (not applicable for all software options)

Configuration computer

If you wish to install the software option with the help of the LANtools, you require a computer with the operating system Windows 7 or later.



Alternatively, activation is also possible with any operating system by means of a browser and WEBconfig. The computer must have access to the LANCOM device that is to be configured. Access may be via the local network or even via remote access.

Current LANconfig

The latest version of LANconfig and LANmonitor (the LANtools) are available for download from the LANCOM Systems homepage under www.lancom-systems.com/downloads/. We recommend that you update these programs before continuing to the installation.

Current firmware in the LANCOM device

The latest firmware updates are available for download from the LANCOM website under www.lancom-systems.com/downloads/. Select your device from the list and download the firmware onto your computer.



Detailed information about updating the firmware is available in the documentation for your LANCOM device.

Necessary registration information

Please have the following information at the ready for your online registration:

- Precise designation of the software option
- The license number (from the proof of license)
- Serial number of your LANCOM device (to be found on its underside)
- Your customer data (company, name, postal address, e-mail address)



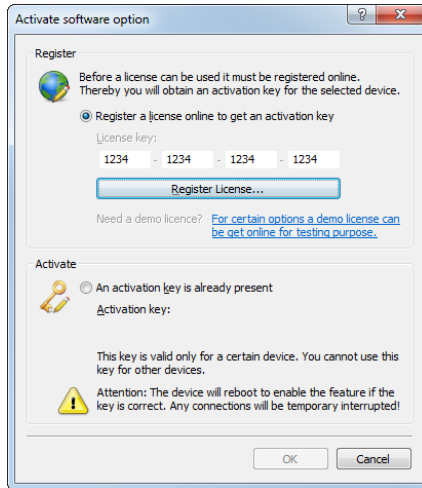
Registration is anonymous and can be completed without specifying personal data. Any additional information may be of help to us in case of service and support. All information is of course treated in the strictest confidence.

Activating the LANCOM software option

There are two ways to activate the LANCOM software option. Either you enter the required registration data in LANconfig (page 04), or you request an activation code online with your registration data and activate your software option by means of a web browser (page 06).

Activation via LANconfig

1. In LANconfig, mark the appropriate LANCOM device (simply click on the entry with your mouse) and select the menu item **Device > Activate software option**.



2. Enter your license key and then click **Register license**.



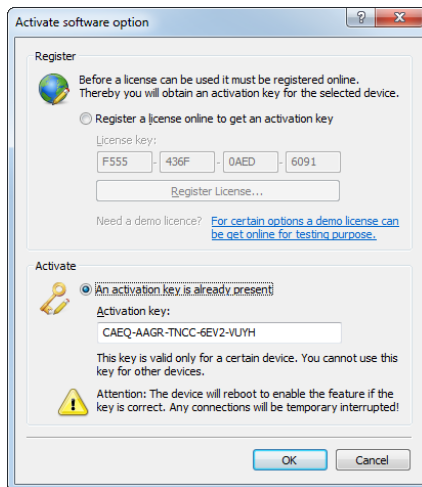
After successful online registration, the license number of your software option is invalidated for any other device. The activation code that is sent to you can only be used with the LANCOM device as identified by the serial number which you provided at registration. Please ensure that you really only want to install the software option on the corresponding device. It is not possible to change to another device at a later date!

3. The LANCOM website opens and your device is displayed along with its serial number. The software option corresponding to the license number you entered will be displayed and a click on **Next** takes you to the page where you enter your registration data.
4. Enter the required information and follow the further instructions. If you submit an e-mail address you will receive confirmation of registration and your activation key via e-mail.



Make sure you store your activation key safely! You may need it to activate your software option again at a later date, for example after a repair.

5. Select the activation key that is displayed on the website or contained in the e-mail, and copy it to the clipboard.
6. Switch to LANconfig. The activation key is automatically inserted from the clipboard.



7. Click on **OK**. The software option is activated now.
8. The device will then restart automatically.

Activation via web browser

The software option comes with a proof of license document that has a license number printed on it. This license number gives you one opportunity to register with LANCOM Systems and to receive an activation code.

This activation code is then used to activate the option on your LANCOM device.



After successful online registration, the license number of your software option becomes invalid. The activation code that is sent to you can only be used with the LANCOM device as identified by the serial number which you provided at registration. Please ensure that you really only want to install the software option on the corresponding device. It is not possible to change to another device at a later date!

Entering the registration data

1. Start a web browser and access the LANCOM Systems website under www.lancom-systems.com/routeroptions/.
2. Enter the required information and follow the further instructions. If you submit an e-mail address you will receive confirmation of registration via e-mail. This completes the online registration.



Make sure you store your activation code safely! You may need it to activate your software option again at a later date, for example after a repair.

Activate software option

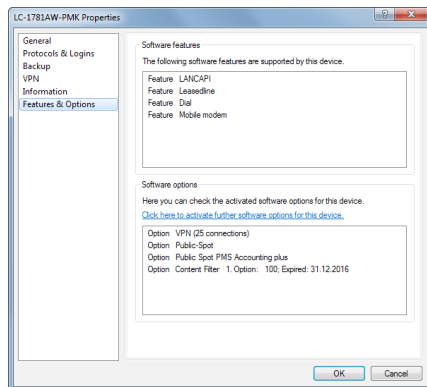
1. Using WEBconfig, login to the appropriate LANCOM device.
2. Open **Extras > Activate software option**.
3. Enter the **activation key** that you received with your online registration.
4. Click on **Send**.
5. The device will then restart automatically.

Help in case of problems

If you have problems with registering your LANCOM software option, please contact us by e-mail at optionsupport@lancom.de.

Checking the activation

You can check if the online activation of your software option was successful by selecting the device in LANconfig and clicking on the menu item **Device > Properties**. The properties window contains a tab named **Features & options** that lists the activated software options.



LANCOM Systems GmbH
A Rohde & Schwarz Company
Adenauerstr. 20/B2
52146 Würselen | Germany
info@lancom.de
www.lancom-systems.com

LANCOM, LANCOM Systems, LCOS, LANcommunity and Hyper Integration are registered trademarks. All other names or descriptions used may be trademarks or registered trademarks of their owners. This document contains statements relating to future products and their attributes. LANCOM Systems reserves the right to change these without notice. No liability for technical errors and / or omissions. 02/2024



LANCOM
SYSTEMS